

2ST Label Printer

Windows Printer Driver

User's Manual

Third Edition: June 17, 2011

TOSHIBA TEC SINGAPORE PTE LTD

Copyright(C)2011

TOSHIBA TEC SINGAPORE PTE LTD

This document describes the precautions for using the 2ST Label Printer Windows Printer Driver.

This document assumes that the reader is familiar with the following:

- General characteristics of Windows and Windows printer driver
- General characteristics of 2ST Label Printer

Notes:

- All rights reserved. It is prohibited to use or duplicate a part or whole of this document without the permission of TOSHIBA TEC SINGAPORE PTE LTD.
- This document is subject to change without prior notice.

* Microsoft, Windows, Windows NT, Windows 2000, and Windows XP are registered trademarks of Microsoft Corporation in the United States and/or other countries.

The official name of Windows is the "Microsoft Windows Operating System".

Table of Content

1. System Requirement	1
2. Driver Installation guide	2
2-1. Install by Plug-N-Play by USB.....	2
2-2. Install by Plug-N-Play by Parallel	2
2-3. Install via "Add Printer"	2
2-4. Install via "Add Printer" for LAN	5
2-5. Hardware Wizard.....	9
2-6. Update Driver	13
3. Printer Properties and Settings	17
3-1. Printer Configuration.....	18
3-2. Printer Status	23
3-3. Device Setting.....	25
3-4. Document Printing.....	27
4. Un-installation the Printer Driver	32

1. System Requirement

OS: Windows 2000(English) / XP Professional (English)
Language: English
Printer I/F: USB (Printer Class)
LAN (TCP/IP)
Parallel(Optional)

2. Driver Installation guide

2-1. Install by Plug-N-Play by USB

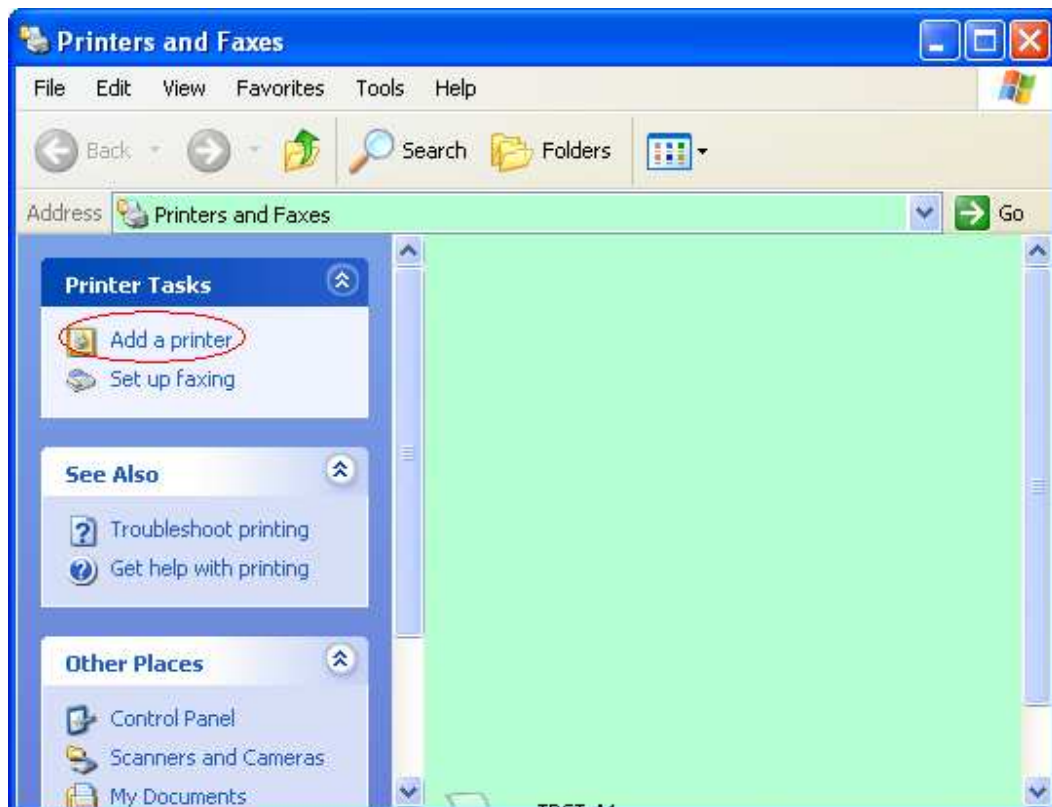
Connect the printer by USB cable when powered on, and the windows OS will detect a new hardware, then go on 2.3 (“Hardware Wizard”) and follow the steps to proceed the installation.

2-2. Install by Plug-N-Play by Parallel

Connect the printer by Parallel cable when powered on, and the windows OS will detect a new hardware, then go on 2.3 (“Hardware Wizard”) and follow the steps to proceed the installation.

2-3. Install via “Add Printer”

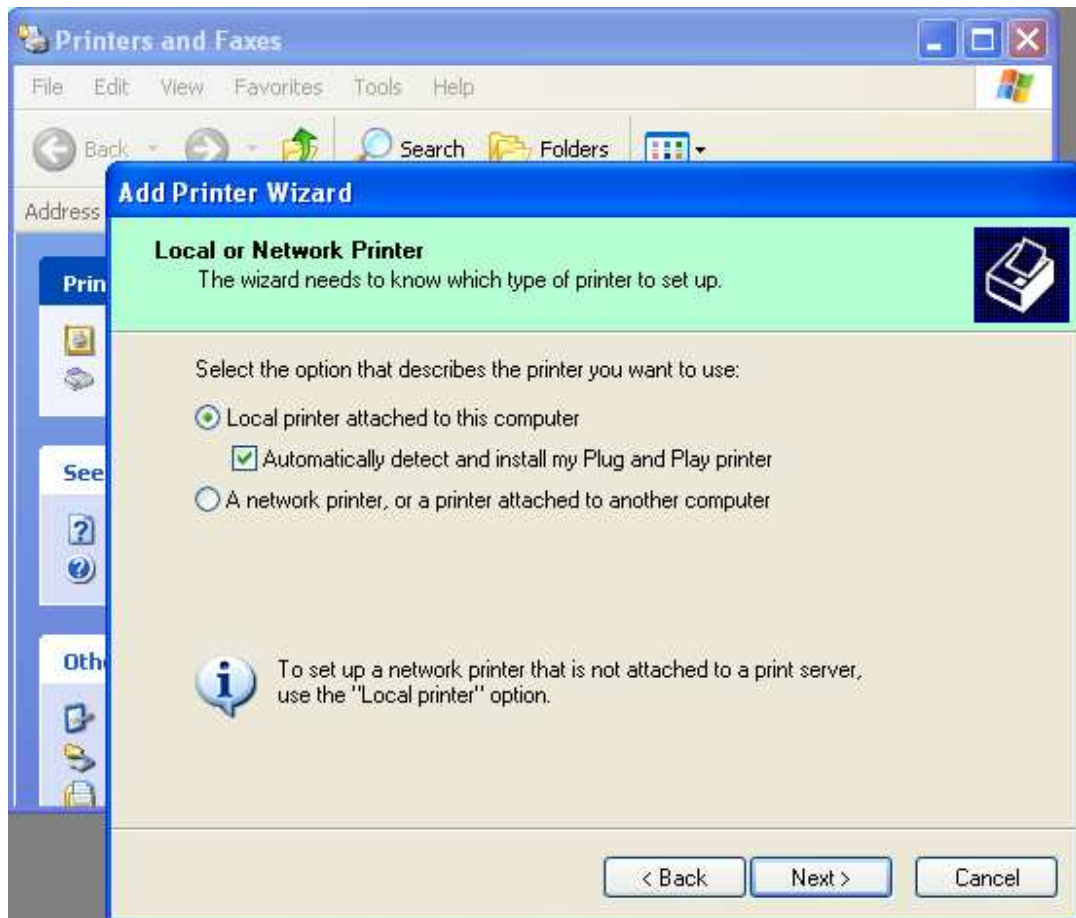
Open **Printers and Faxes**, Click **Add a printers**



Click **Next**

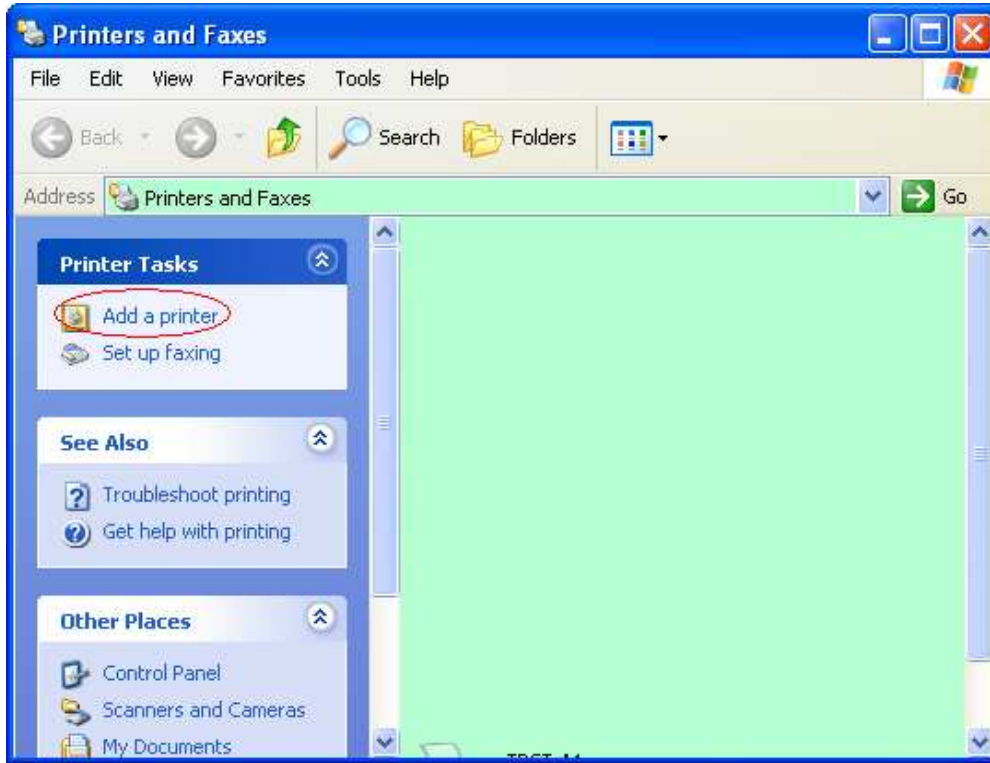


Select “Local printer” and “Automatically detect and install my Plug and Play printer”.



PC will detect new hardware and open "Hardware Wizard", go to 2.5 to proceed the succedent steps.

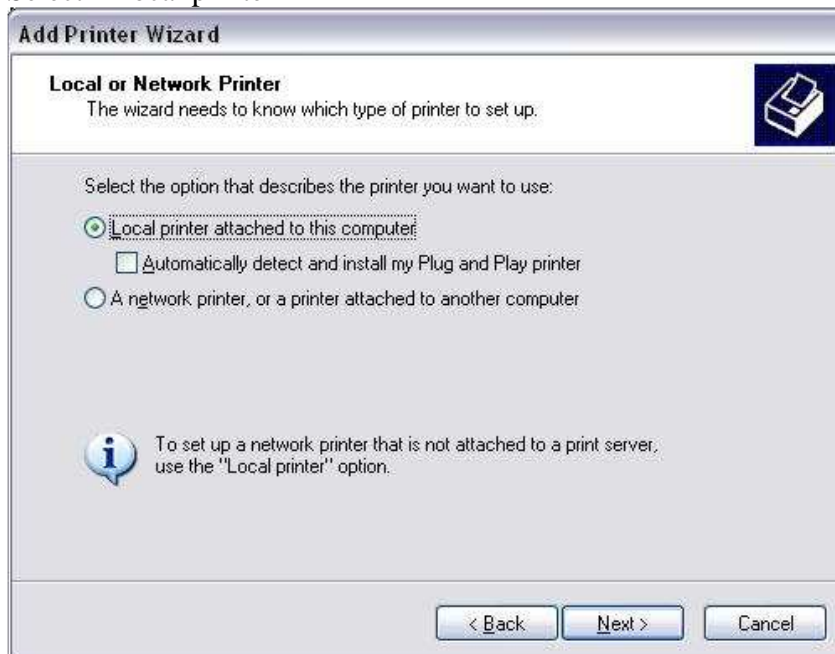
2-4. Install via “Add Printer” for LAN
Open **Printers and Faxes**, Click **Add a printers**



Click **Next**

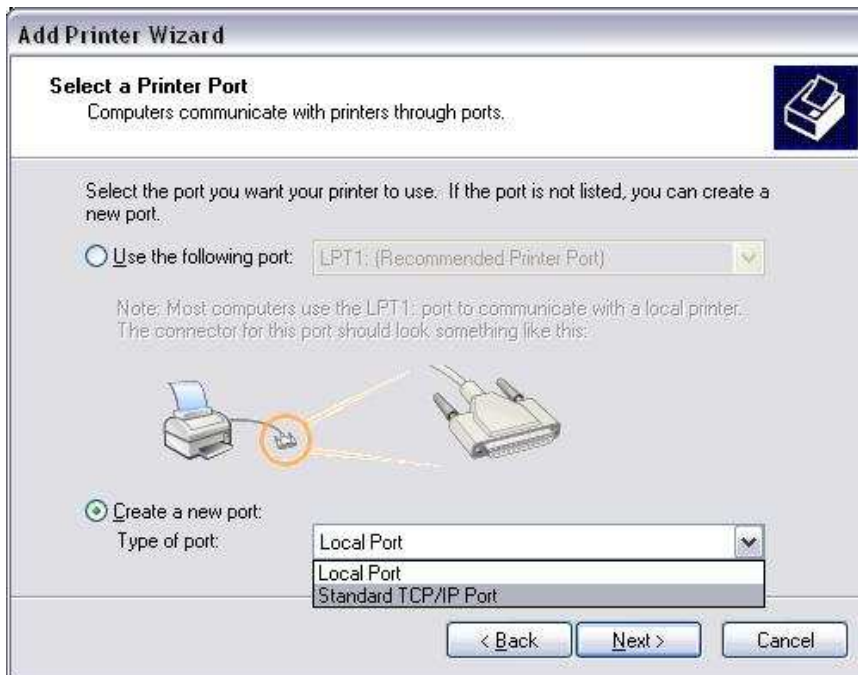


Select "Local printer".



Select "Create a new port:" and Standard TCP/IP Port.

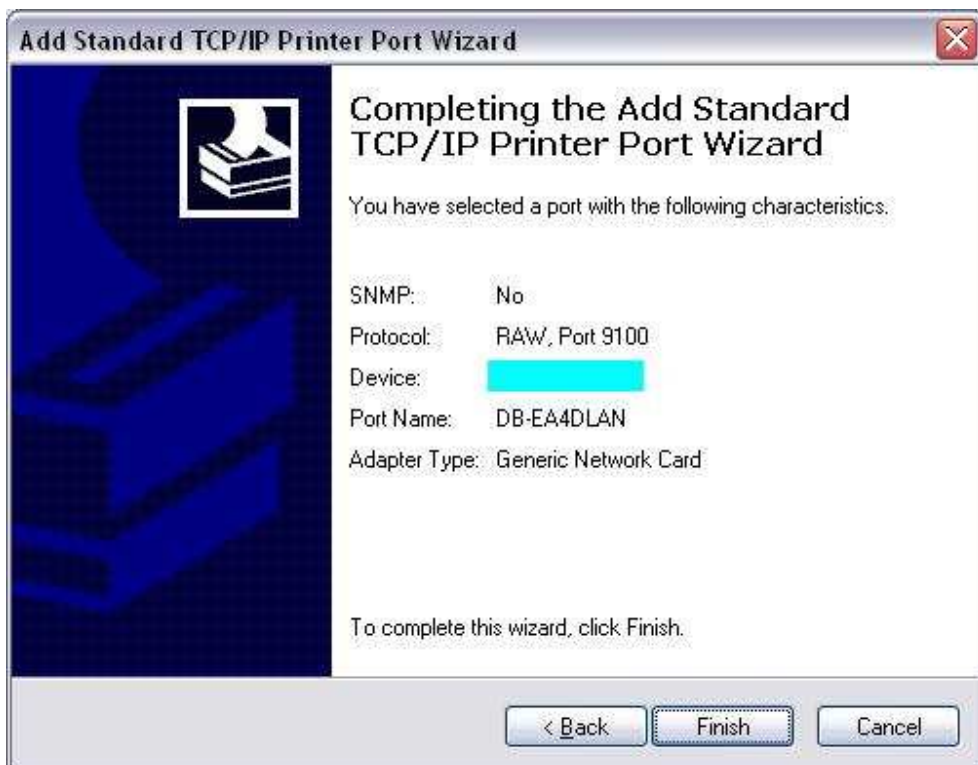
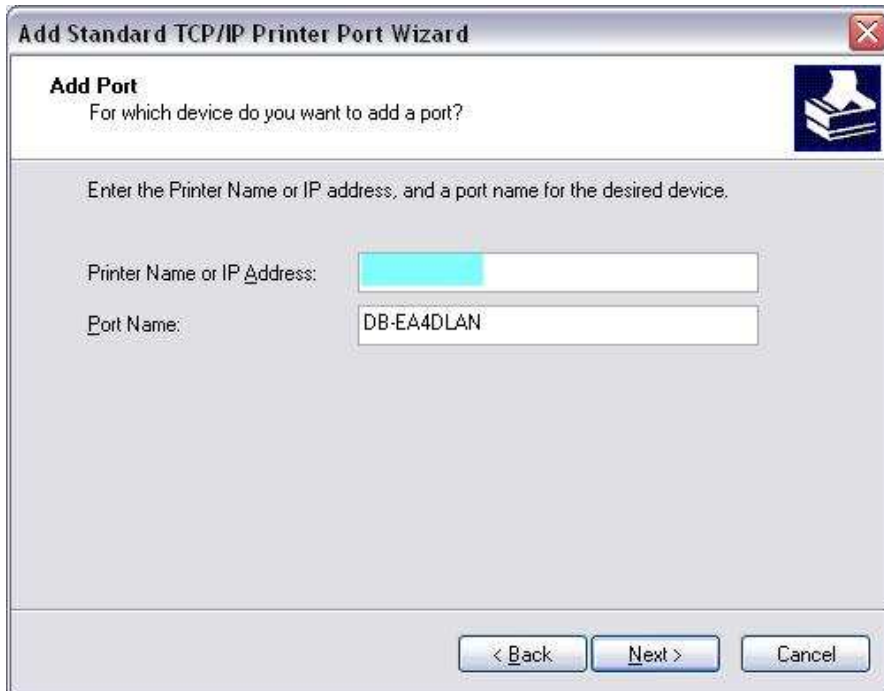
Then click “Next”



Click “Next”



Input printer IP address to “Printer Name or IP Address:”.



PC will detect new hardware and open “Hardware Wizard”, go to 2.5 to proceed the succedent steps.

2-5. Hardware Wizard

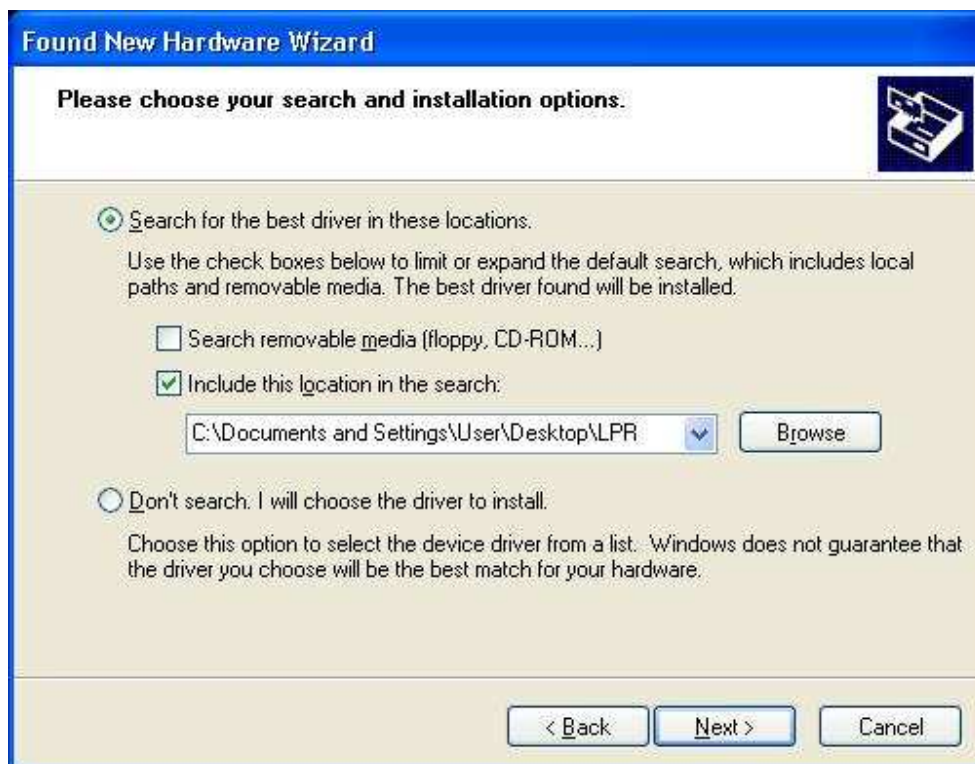


When the New Hardware Wizard ask whether to connect to Windows Update, select **No, not this time** and click **Next**.

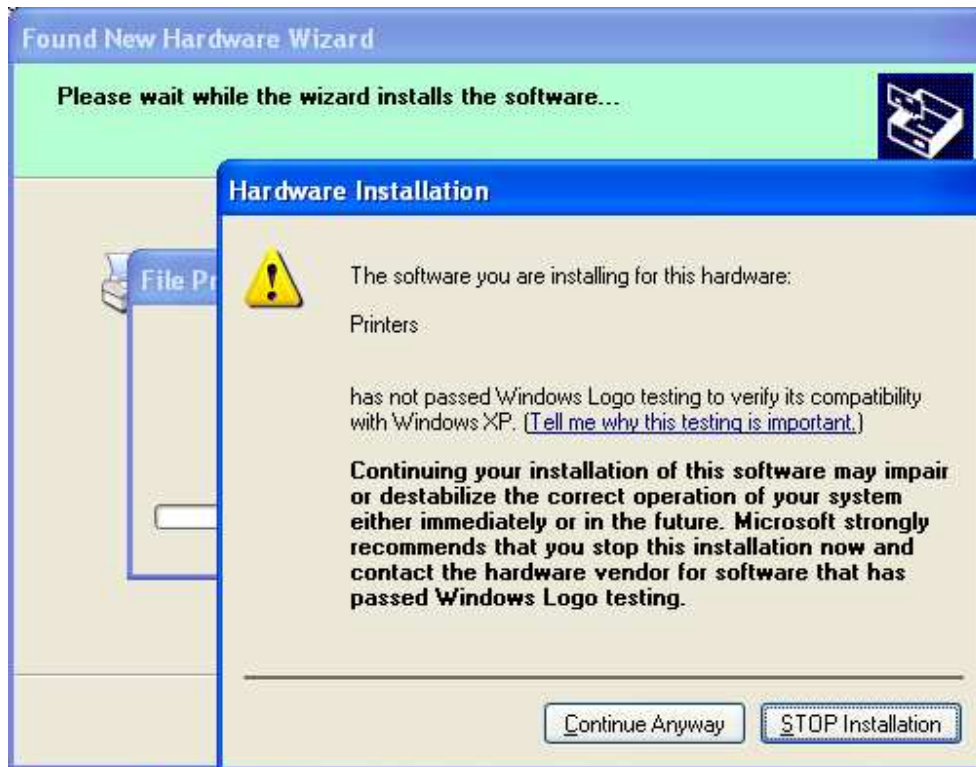
Select **Install from a list or specific location (Advanced)**, Click **Next**



Select **Search for the best driver in these locations**, and then tick on **Include this location in the search**, Browse for the printer driver file location and click **Next**



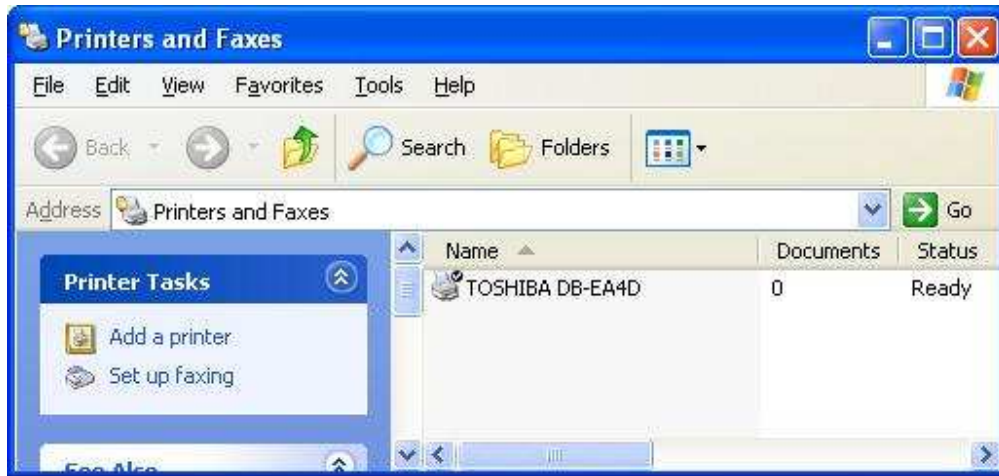
The OS will give windows logo testing warning, just ignore and click **Continue Anyway**



After OS copied the driver files into system, Click **Finish** to complete installation

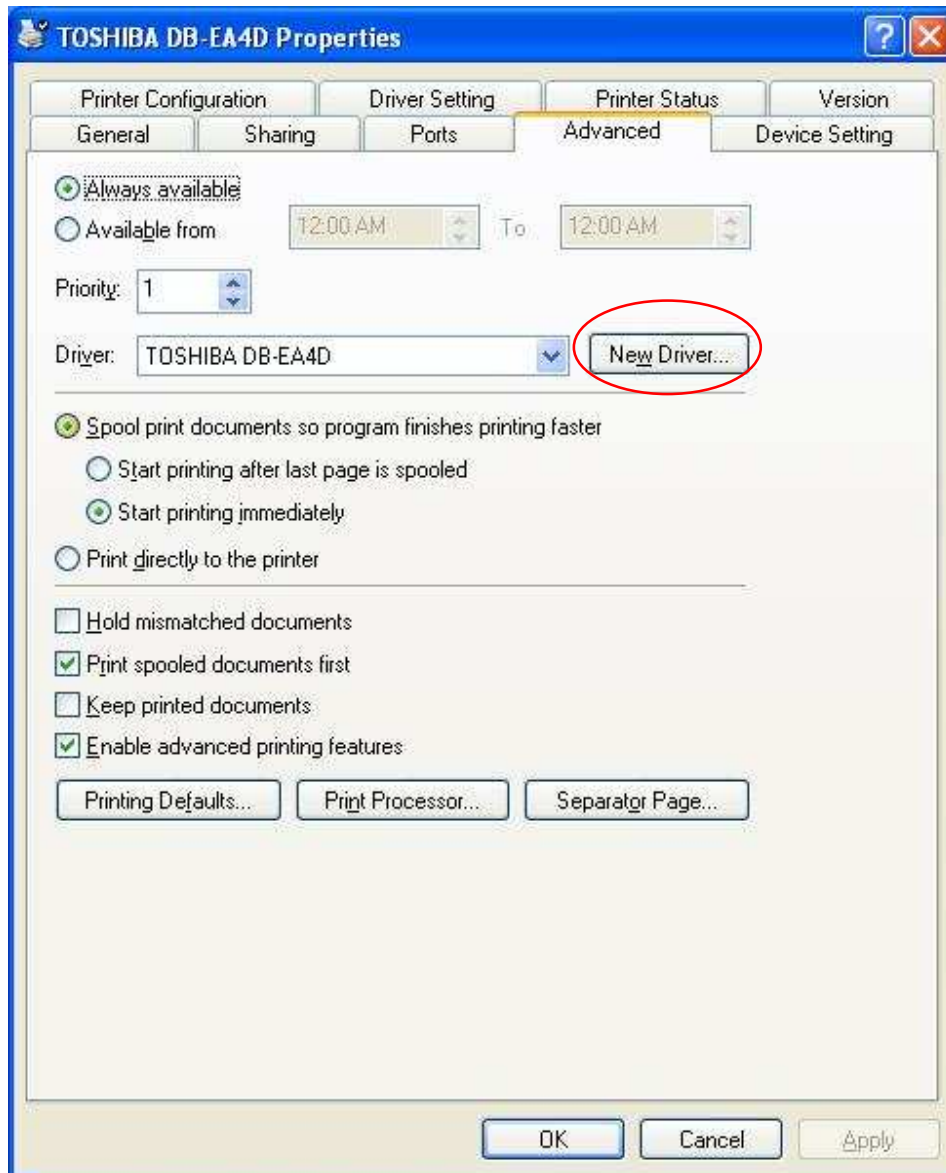


After installation, you'll see TOSHIBA DB-EA4D in the Printers and Faxes folder



2-6. Update Driver

To update driver, go to **printer properties** (see [3.Printer Properties and Settings](#)) and select **advanced** tab like the picture shown below.

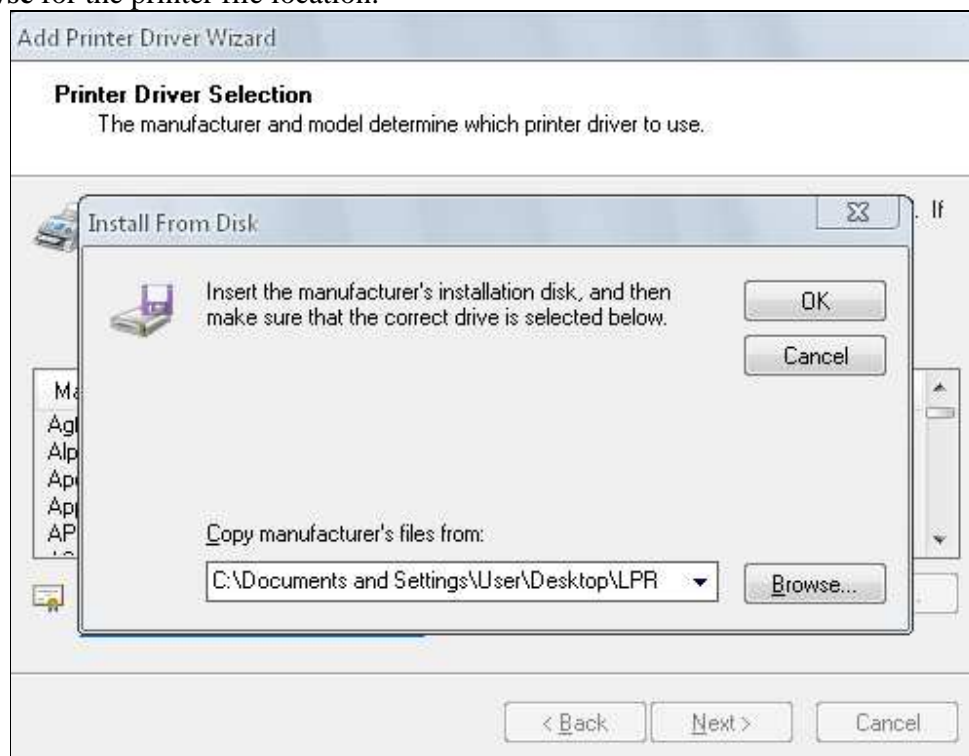


Then click on **New Driver** to update the driver. Select **Next** when **Add Printer Driver Wizard** window come up.

Then click on **Have Disk** button as shown in the picture below.



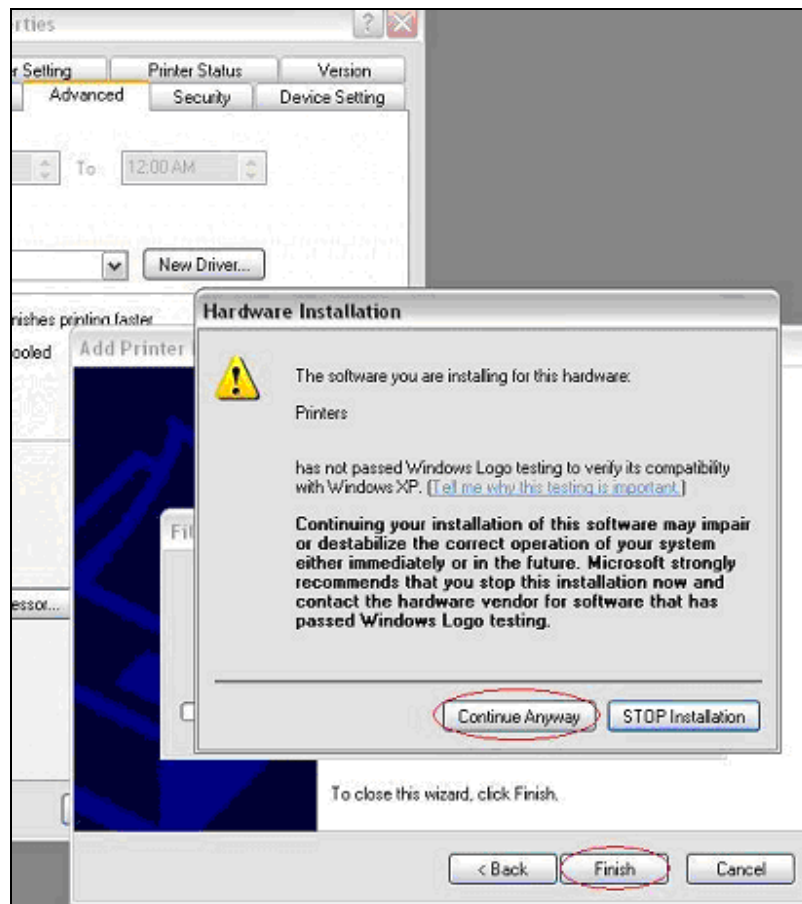
Browse for the printer file location.



Select **2ST_Label_Printer** and click **Next**.



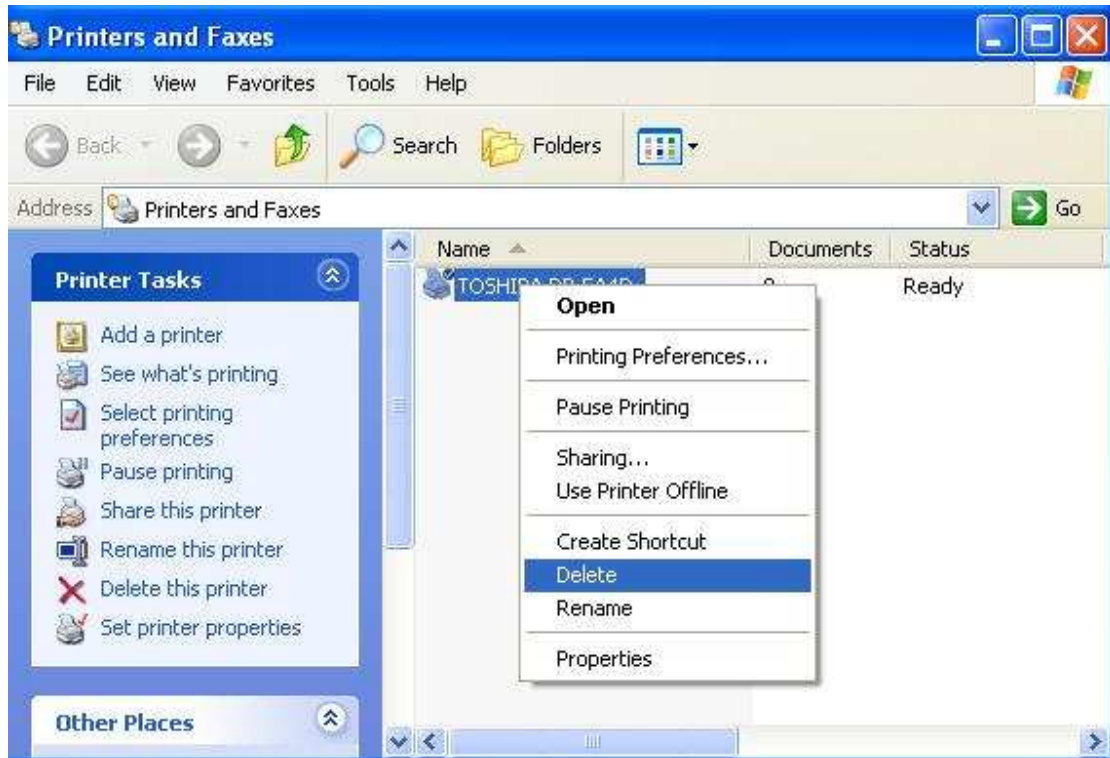
Click **Finish** and click **Continue Anyway** when a **Hardware Installation** window comes up as shown in the picture below.



Lastly, **restart** the computer to update the printer driver.

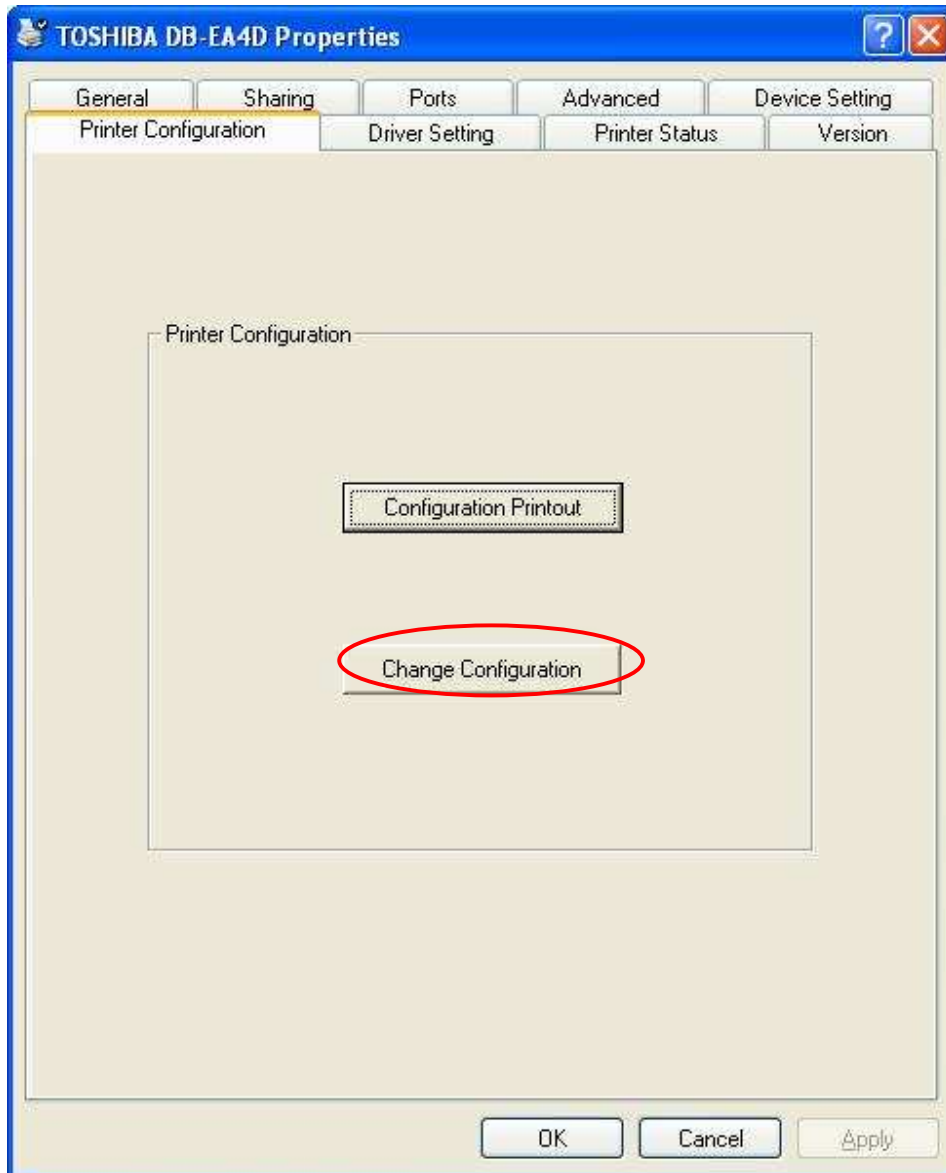
3. Printer Properties and Settings

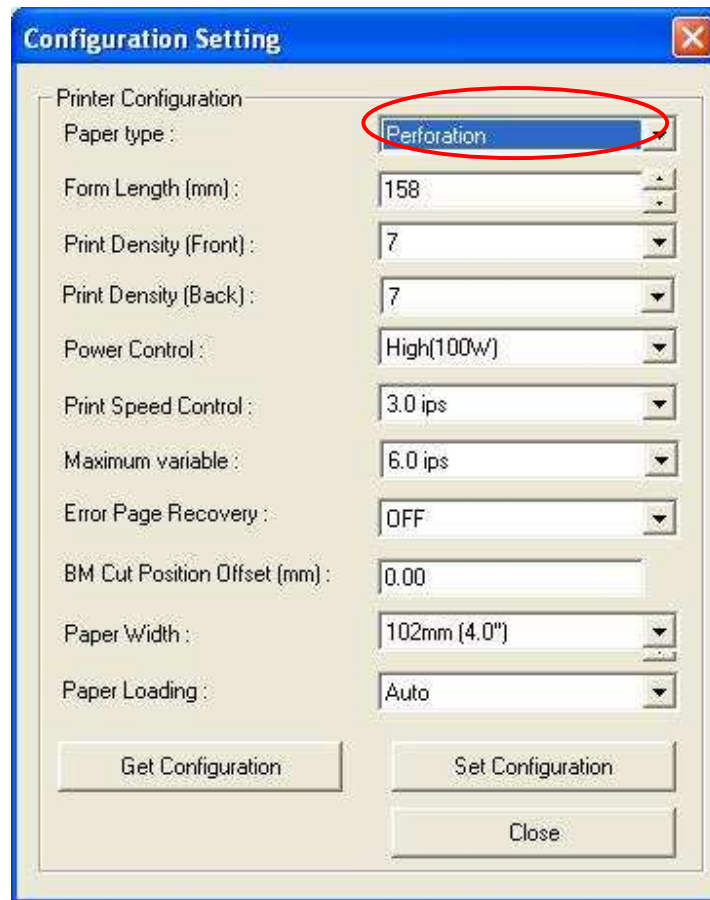
Click right button and select "Properties..." on the " DBEA-4D" icon to open the printer's property.



3-1. Printer Configuration

Under printer driver properties, go to “Printer Configuration” tab and click “**Change Configuration**”.

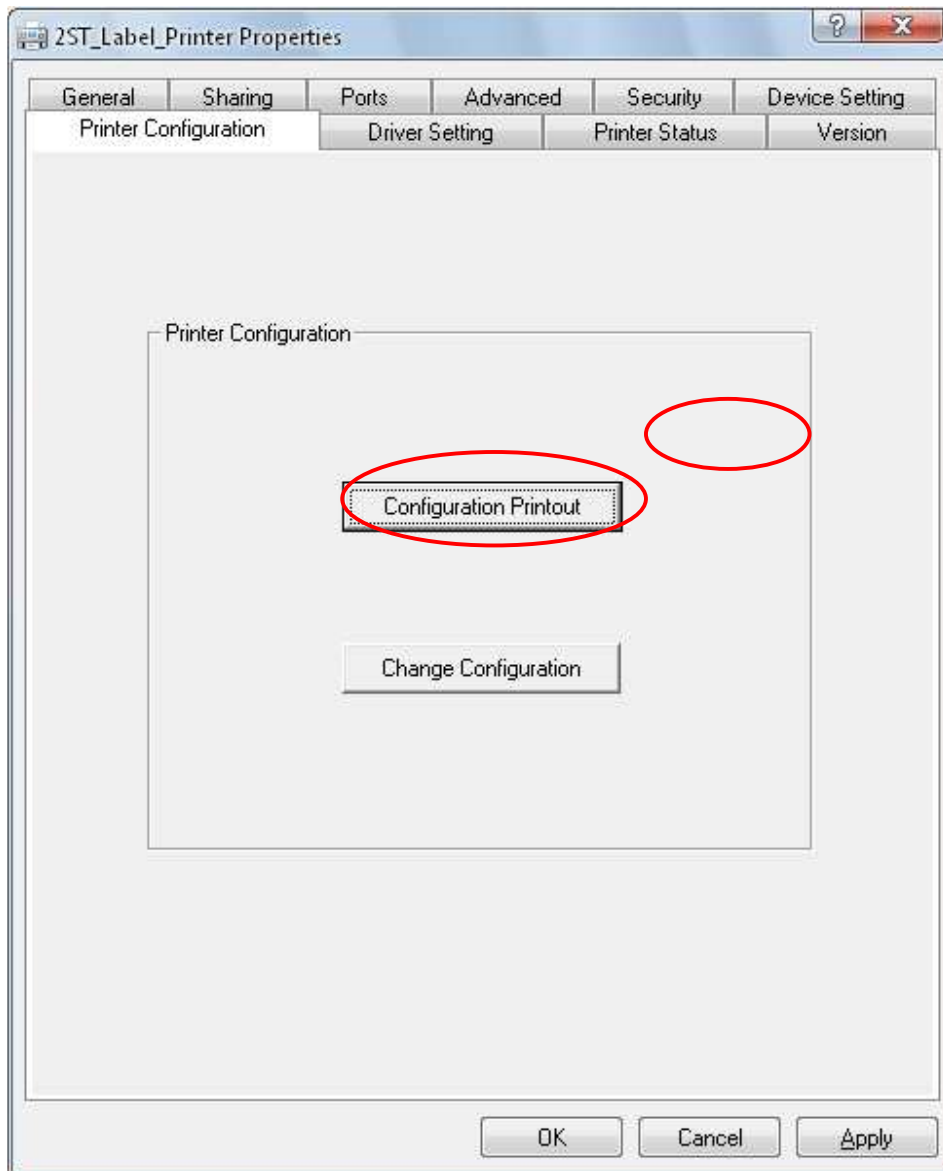




Above window will be displayed and in this part we can get all printer settings here by pressing **Get Configuration**, and all can change the value for various settings, and press **Set Configuration** to save the settings into printer.

NB: In order to print configuration of the printer, it is necessary to change the paper setting of printer driver to “Document Length” mode.

Now under printer driver properties, go to Printer Configuration tab and click on **“Configuration Printout”** to print Diagnostic Form




```

*** Diagnostics Form ***

MODEL
  Model Number       : 0000000000000000
  Printer S/N       : 0000000000
  Printer Engine S/N : 0000000000

FIRMWARE(Version, CRC)
  Boot Firmware Version : V00.05, 96C0
  FTP Firmware Version  : V00.02, 3C0C
  Main Firmware Version  : V00.11, 9EBF
  SBCS CG Version       : V00.10, 2142

COMMUNICATION INTERFACE
  Interface Type       : USB
  Printer IP Address   : 192.168.1.11
  Subnet Mask          : 255.255.255.0
  Default Gateway      : 0.0.0.0
  Get IP Address       : Manual
  DHCP IP Address      : 0.0.0.0
  Community Read Only  : public
  Community Read Write :
  IP Trap1 Trap        : Disable
  IP Trap1 Address     : 0.0.0.0
  IP Trap1 Community Name :
  IP Trap2 Trap        : Disable
  IP Trap2 Address     : 0.0.0.0
  IP Trap2 Community Name :
  Socket Port(TCP)     : 9100
  Socket Port(UDP)     : 3000
  Socket Port(UDP2)    : 3001
  MAC Address          : 00:00:00:00:00:00
  Physical Layer       : Auto Negotiation
  FTP User Name        : anonymous

PRINTER CONFIGURATION
  Print Mode           : 1ST
  Print Density        : 0
  Power Control        : High
  Page Protect         : On
  Maximum Speed Control : 3.0 ips
  Error Page Recovery  : Off
  BM Cut Offset        : +5
  Paper Load          : Auto
  Rotary Cutter        : Manual

PRINT CONDITION ADJUSTMENT
  Top Margin           : 0
  Label Top Margin    : 0
  BM Cut Position      : 0
  Label Cut Position   : +1
  Perforation Cut Position : 0

PRINTER TEST MODE
  Paper Type           : Document length
  Form Length          : 560
  Paper Width          : 4 inch

SENSOR LEVEL(On, Off, T.H.)

Black Mark Paper
  Paper End Sensor     : 2.9V, 0.1V, 1.5V
  Exit Sensor          : 2.2V, 0.1V, 1.2V
  Black Mark Sensor    : 1.5V, 0.2V, 0.9V

White Paper
  Paper End Sensor     : 3.1V, 0.1V, 1.6V
  Exit Sensor          : 3.0V, 0.1V, 1.5V
  TOF Sensor           : 2.9V, 0.1V, 1.5V

Label Paper
  Paper End Sensor     : 3.0V, 0.1V, 1.6V
  Exit Sensor          : 2.6V, 0.1V, 1.3V
  TOF Sensor           : 2.1V, 0.1V, 1.1V
  Label Sensor         : 2.5V, 2.1V, 2.3V

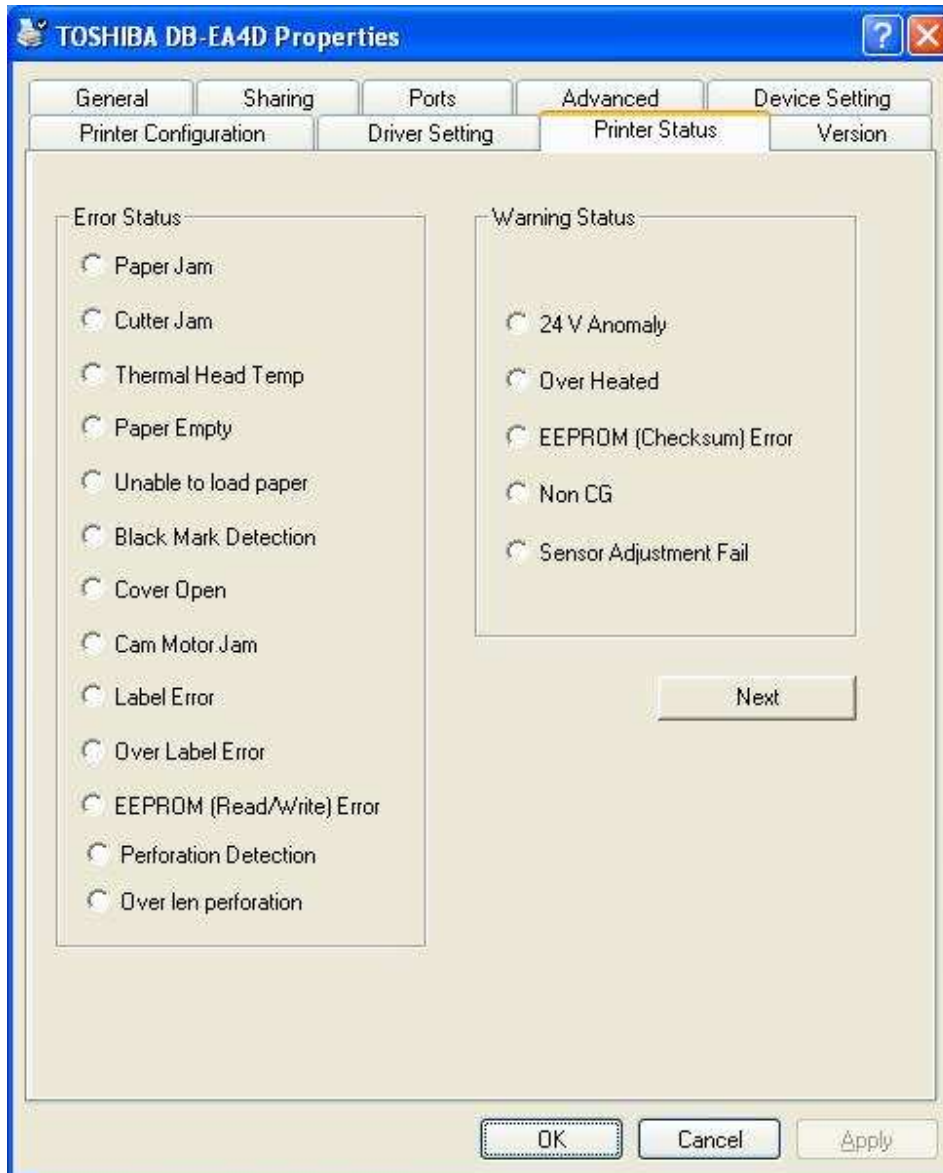
Perforation Paper
  Paper End Sensor     : 3.1V, 0.1V, 1.6V
  Exit Sensor          : 3.0V, 0.1V, 1.5V
  TOF Sensor           : 2.9V, 0.1V, 1.5V

TALLIES(USER, PERMANENT)
  Print Line           : 49, 49
  Hours On             : 0, 0
  Flash Cycle          : 63, 63
  Cover Open           : 121, 121
  Max Temperature      : 0, 0
  Paper Jam            : 10, 10
  CAM Rotor Jan       : 1, 1
  Knife Cut            : 33, 33
  Cutter Jan           : 0, 0

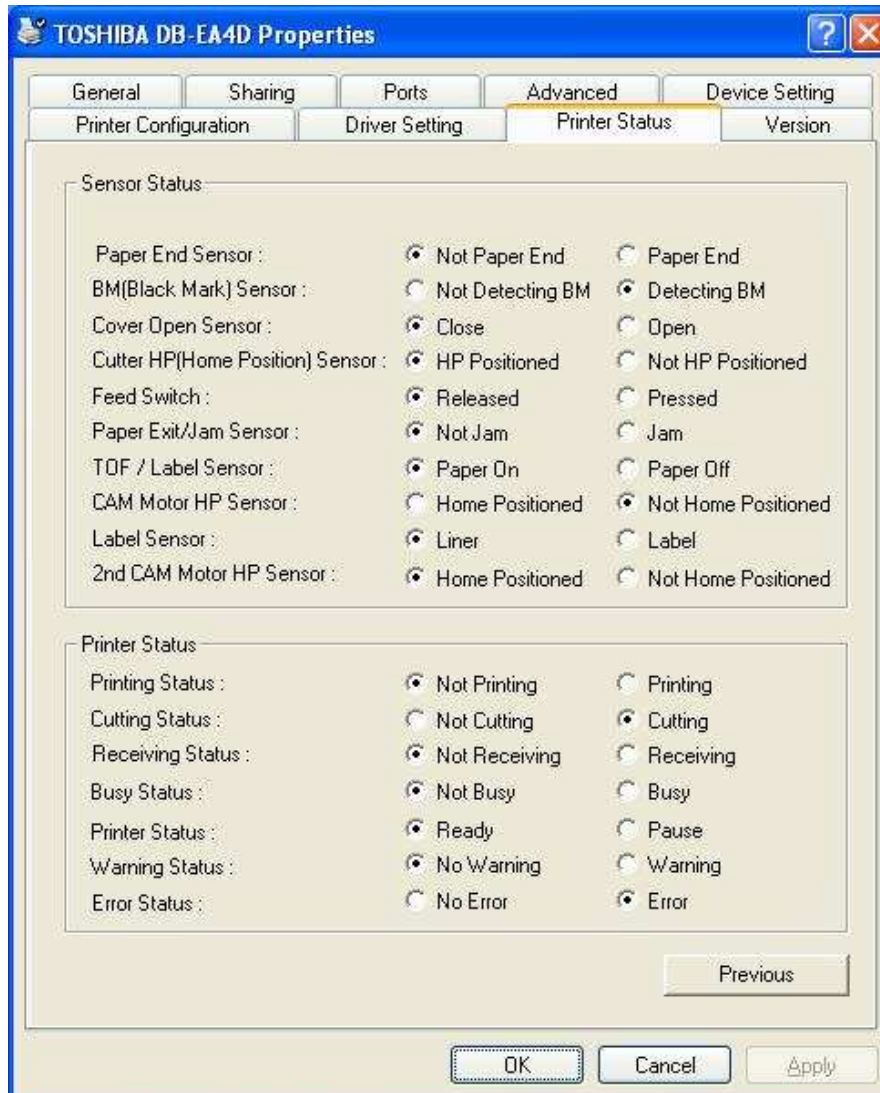
```

3-2. Printer Status

Click on Printer Status page to display Error and Warning Status:

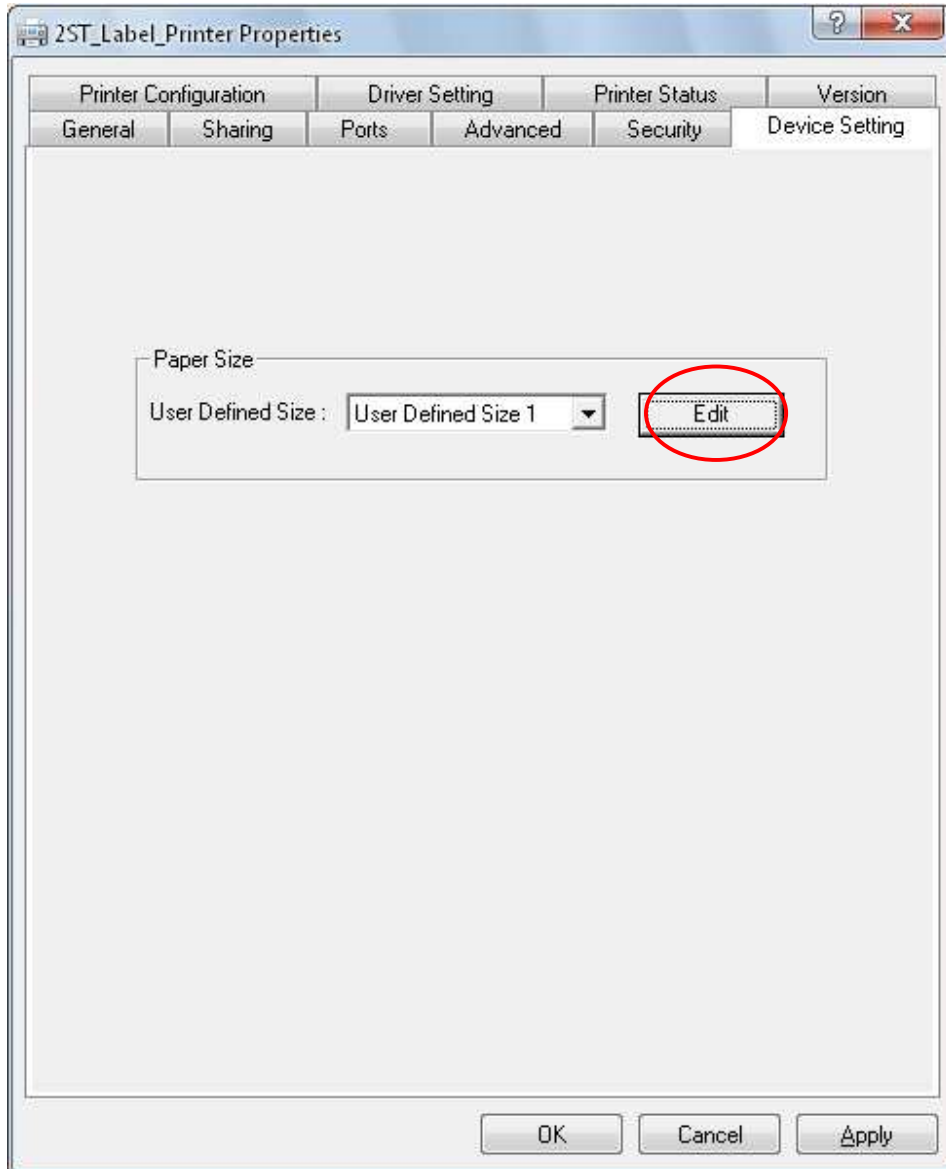


Click **Next** to display sensor and printer status



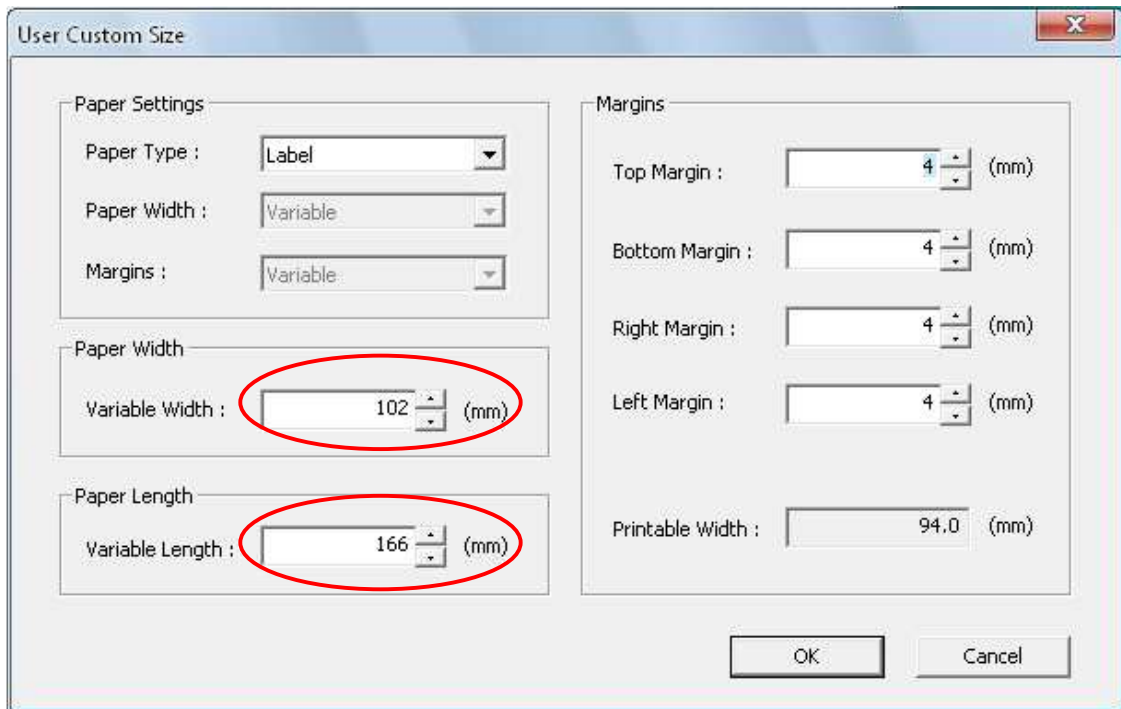
3-3. Device Setting

On the Printer Properties window, Click to show **Device Setting** page,
Click **Edit** to

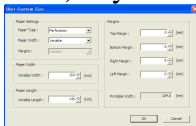


Paper width and height can be changed. Change the height to a larger number if you want to print long page (e.g A4 size is 297mm)

NB: For Label printing, the width/height defined correspond to label width/length.

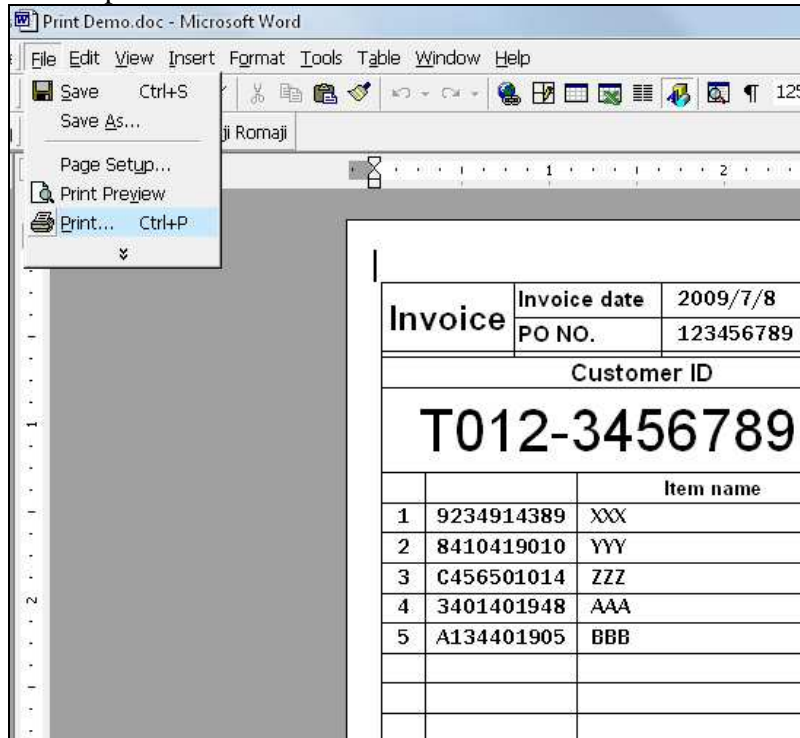


Note) If you want to use perforation paper (with hole), please refer below setting.

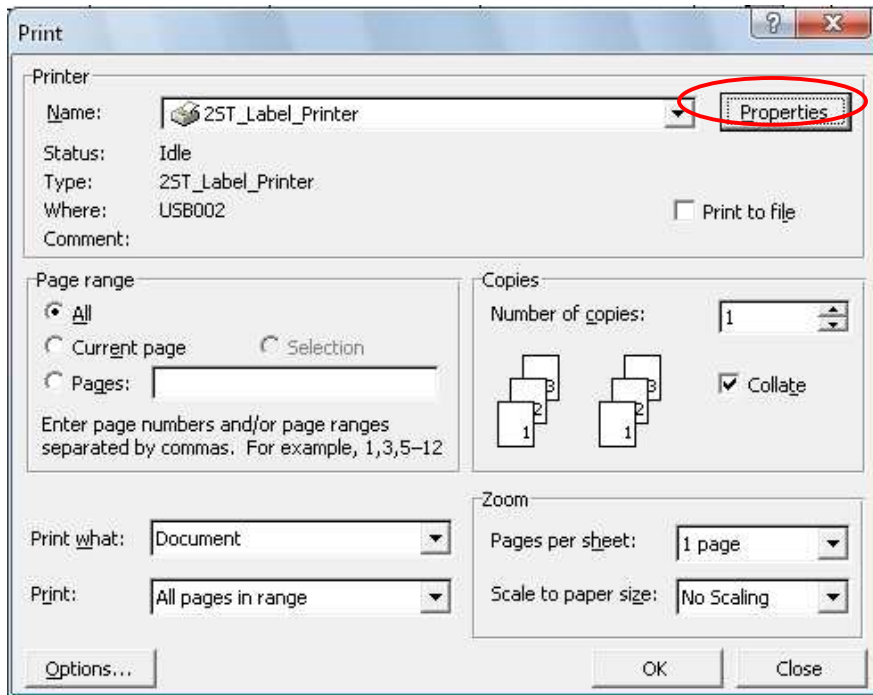


3-4. Document Printing

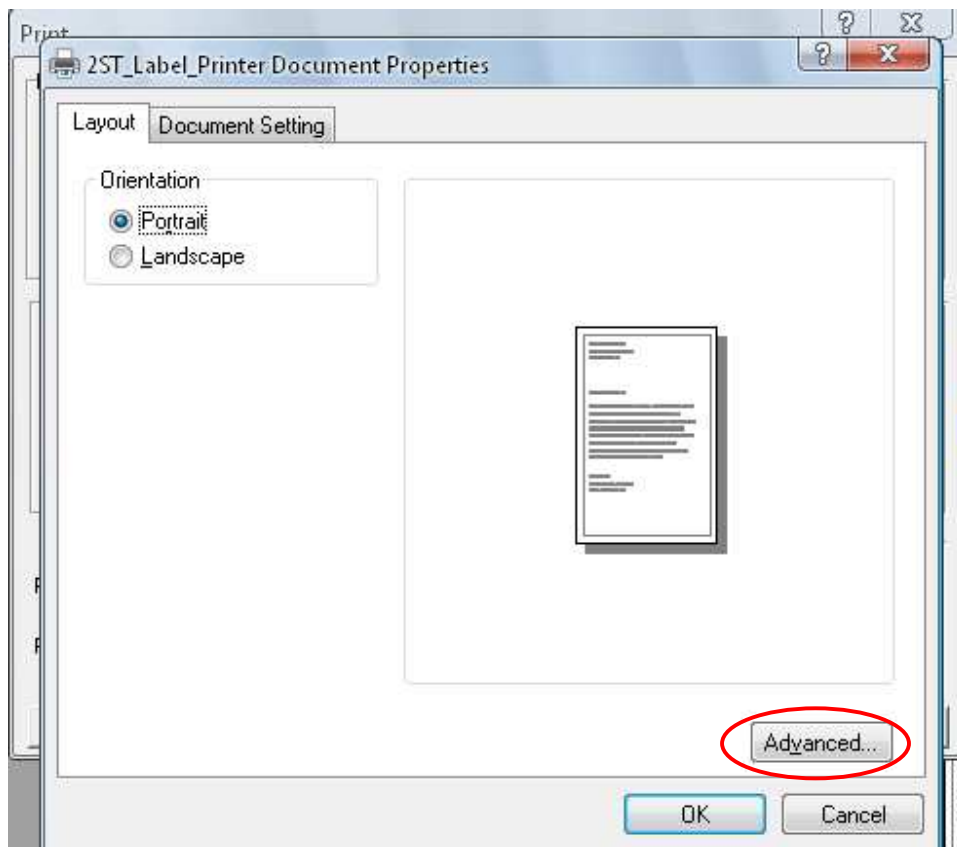
Open a Word doc to print.



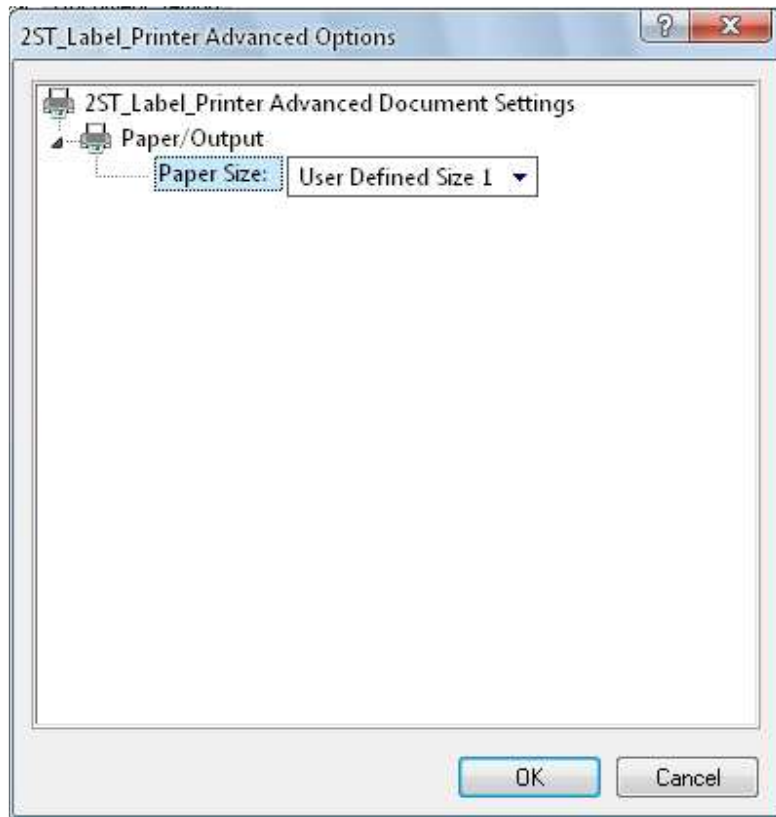
Select 2ST_Label_Printer and click properties



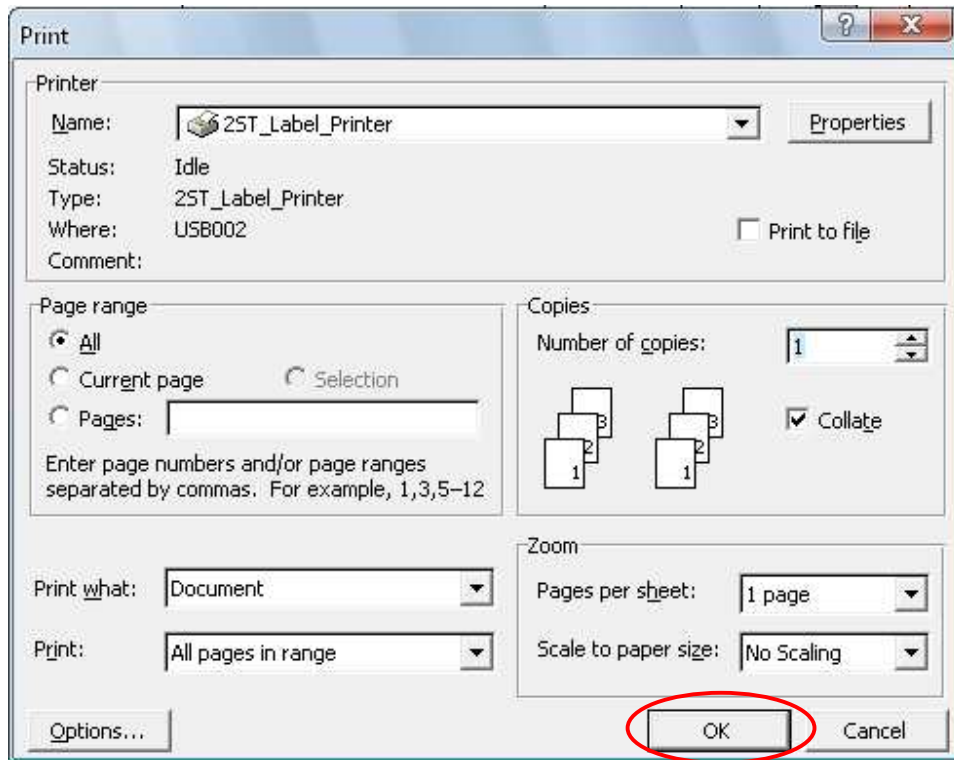
Click **Advance**




Select the **User Defined Size** that previously defined, and click **OK**.



Click **OK** to print the document:



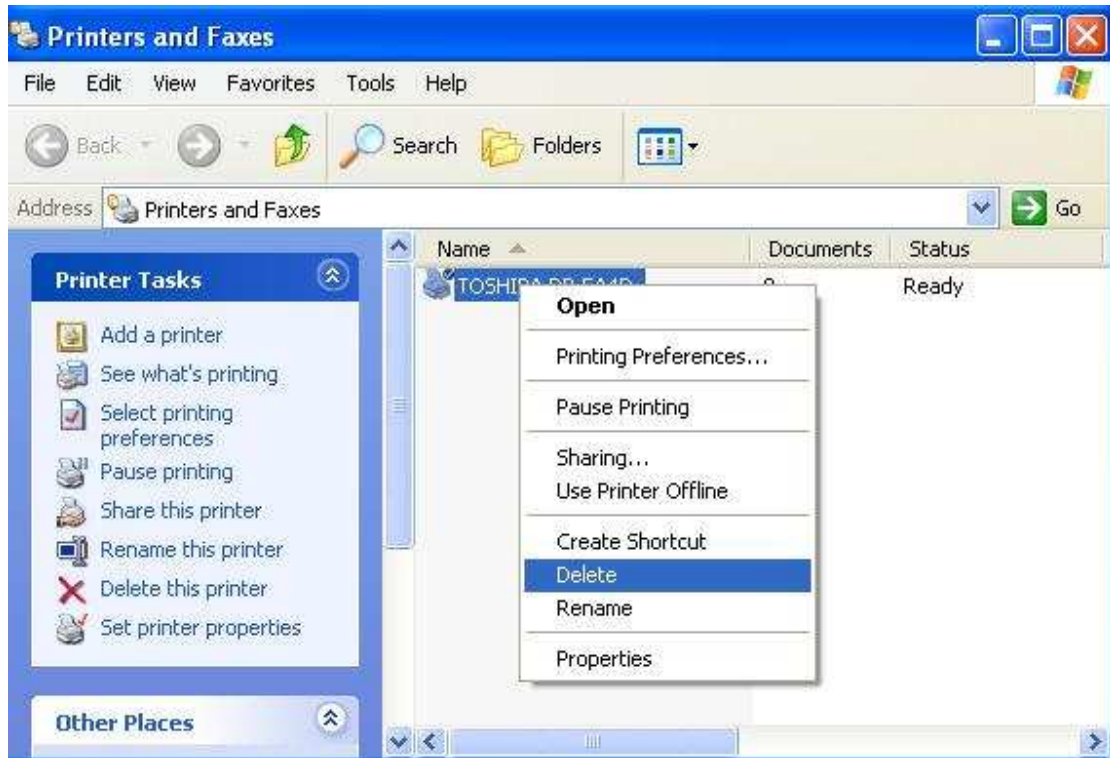
The following is the print result

Invoice	Invoice date	2009/7/8	TTEC	
	PO NO.	123456789		
Customer ID			Shipping date	
T012-3456789			2009/7/15	
			Shipping time	
			AM10:00 - 11:00	
		Item name	Price	Qty
1	9234914389	XXX	10,000	1
2	8410419010	YYY	999	1
3	C456501014	ZZZ	5,600	1
4	3401401948	AAA	21,200	1
5	A134401905	BBB	87,005	1
Remark				
PO numbers				

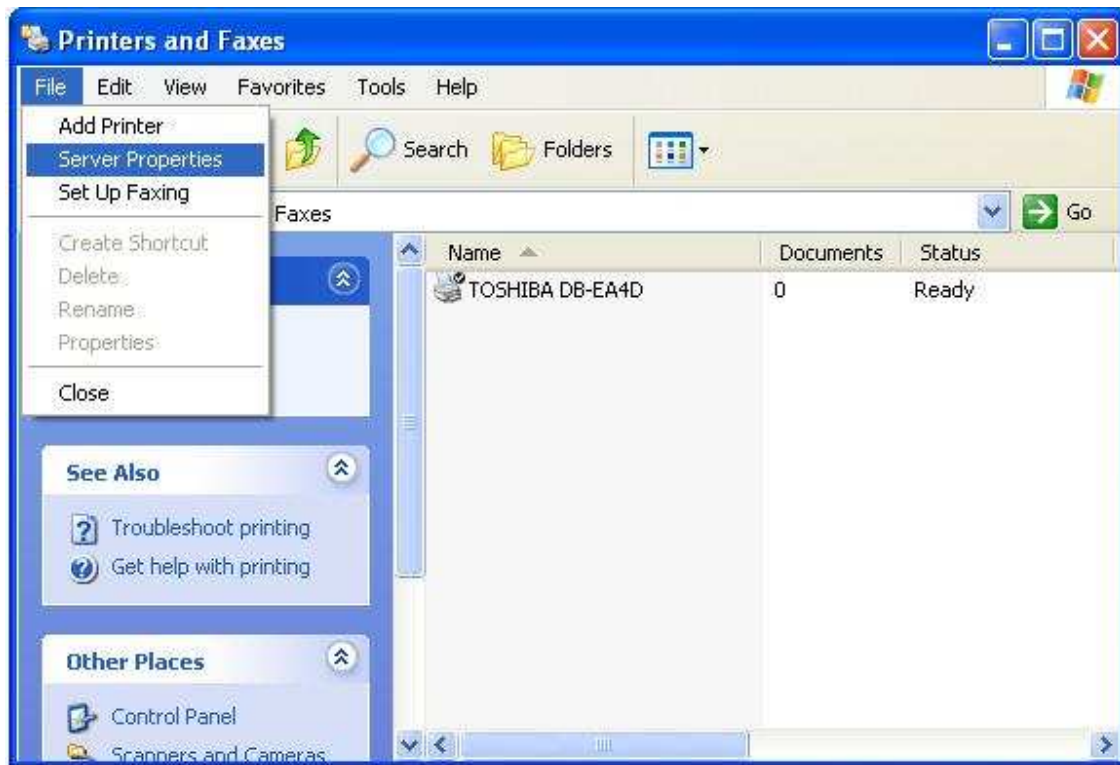
Reasons to return/change				
<p>※This is only a sample</p>				

4. Un-installation the Printer Driver

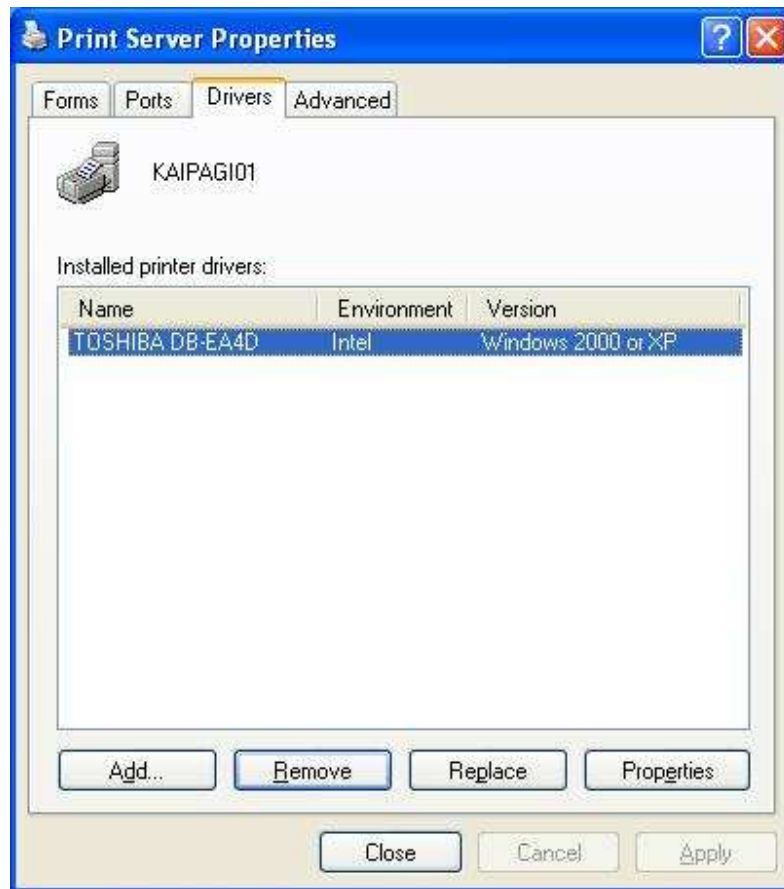
In Printer and Faxes window, right click the “DB-EA4D” and select “Delete”.



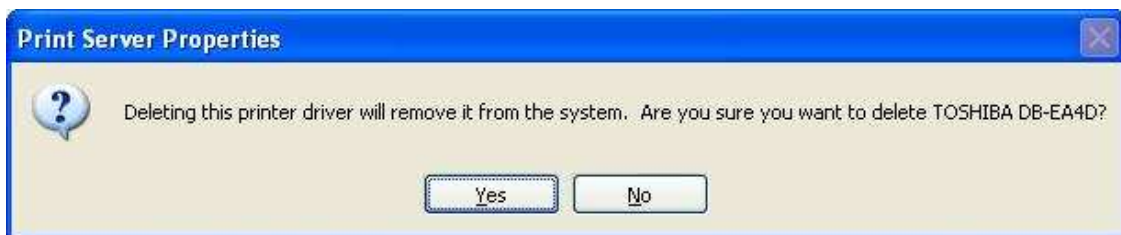
Right click at the Printer and Faxes window, select Server Properties:



In the Drivers page, select DB-EA4D and click remove



Click Yes to confirm:



The printer is successfully removed then.